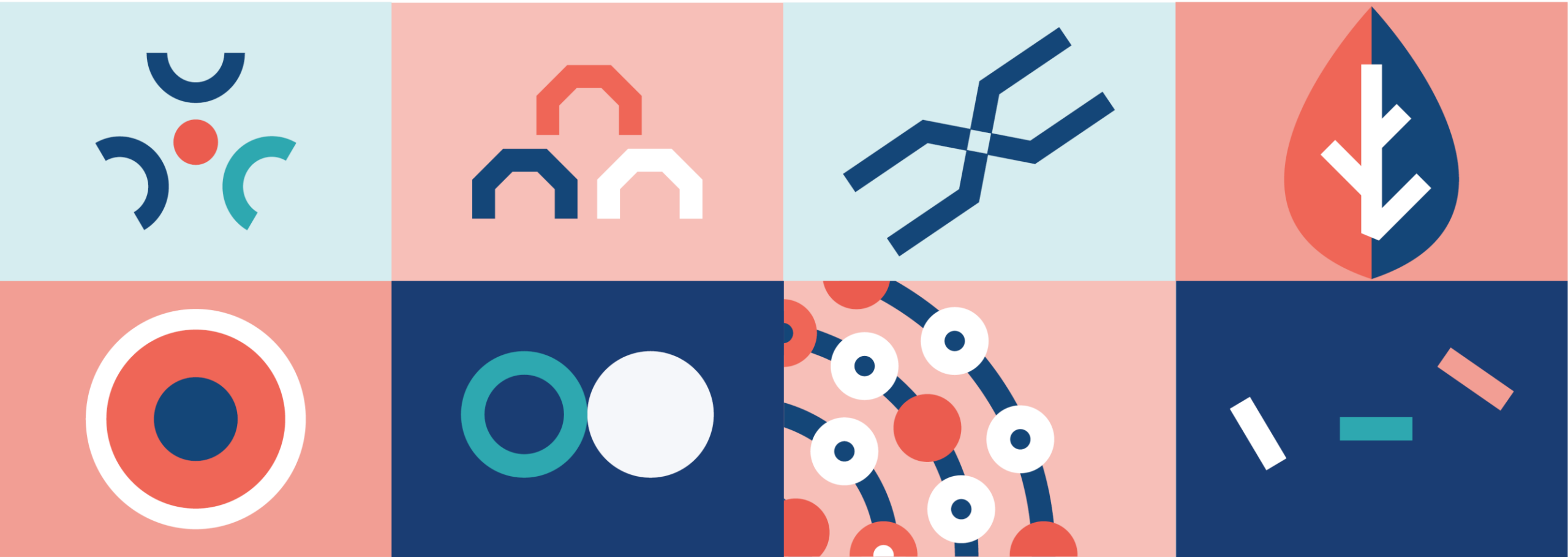


The National Institute for Health and Care Research (NIHR) in Kent, Surrey and Sussex



The National Institute for Health and Care Research (NIHR) in Kent, Surrey and Sussex

The mission of the National Institute for Health Research (NIHR) is to improve the health and wealth of the nation through research.

We do this by:

- Funding high quality, timely research that benefits the NHS, public health and social care;
- Investing in world-class expertise, facilities and a skilled delivery workforce to translate discoveries into improved treatments and services;
- Partnering with patients, service users, carers and communities, improving the relevance, quality and impact of our research;
- Attracting, training and supporting the best researchers to tackle complex health and social care challenges;
- Collaborating with other public funders, charities and industry to help shape a cohesive and globally competitive research system;
- Funding applied global health research and training to meet the needs of the poorest people in low and middle income countries.



In Kent, Surrey and Sussex the NIHR partners are

- Research Design Service South East
- Clinical Research Network Kent, Surrey and Sussex
- Applied Research Collaboration Kent, Surrey and Sussex



NIHR Research Design Service South East

A bespoke service to help you design studies and successfully apply for grants.

As a key part of the National Institute for Health and Care Research (NIHR), ten Research Design Services in England support health and social care researchers to design and develop high-quality research proposals to NIHR and other national peer-reviewed funding programmes.

RDS SE operates from the Universities of Brighton, Kent and Surrey. We work closely with local NIHR partners; the Clinical Research Network (CRN KSS) and Applied Research Collaboration (ARC KSS).

As experienced researchers with expertise across many disciplines and methodologies. We can help you to:

- develop your research question, design and methods
- signpost to suitable funding programmes
- embed Patient and Public Involvement (PPI) and Equality, Diversity and Inclusion (EDI) in research
- build your research team
- transform an initial idea into a potentially fundable proposal

RDS SE is here to support you and your research career - at all stages of your journey.



NIHR Clinical Research Network Kent, Surrey and Sussex

Helping you deliver NIHR portfolio research in the NHS, public health and social care settings.

The CRN Kent, Surrey and Sussex, hosted by the Royal Surrey NHS Foundation Trust, provides the infrastructure, support and funding that drives high-quality research in our region across the health and care system.

We offer opportunities for patients, members of the public and organisations to take part in research.

We support NIHR portfolio research in NHS, public health and social care settings, such as, universities, schools, care homes, hospices, prisons and clinical settings. Our research covers over 30 specialties. To be eligible for portfolio inclusion your study must meet the definition of research, have ethical approval and full funding from open national competition. Our Study Support Service offers advice at every stage, from study feasibility, help with setting up in different research settings and access to the staff or resources to support research delivery. Research teams and healthcare staff can also access free training and the public can find out about local opportunities to Be Part of Research.



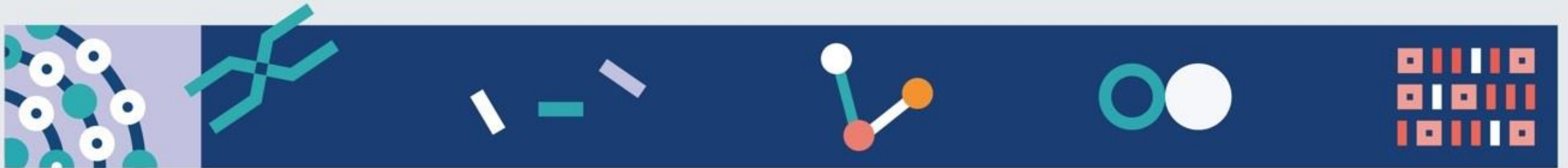
local.nihr.ac.uk/lcrn/kent-surrey-and-sussex



crnkss.studysupport@nihr.ac.uk



[@NIHRCRN_kss](https://twitter.com/NIHRCRN_kss)



NIHR Applied Research Collaboration Kent, Surrey and Sussex

The NIHR Applied Research Collaboration in Kent Surrey and Sussex (ARC KSS) is one of 15 ARCs across England that supports applied health and social care research by responding to and meeting the needs of its local populations and local health and social care systems. The ARCs also undertake implementation research to increase the rate at which research findings are implemented into practice.

Hosted by Sussex Partnership NHS Foundation Trust , we work with local providers of NHS services, care services, NHS commissioners, local authorities, universities, private companies and charities to conduct high quality, applied health and care research that addresses the specific health or care issues in our region. Full list of partner organisations are available on the website: arc-kss.nihr.ac.uk/about-us/member-organisations.

Our eight key research themes include: children and young people's mental health, social care, dementia, primary and community health services, co-production, health and social care economics, digital innovation and public health.

We are also the national lead for adult social care and social work, working with eight other ARCs across England to support and stimulate the implementation of evaluated service change at both a national and regional level, as identified by care users, carers, practitioners, professionals, researchers and the wider public.



arc-kss.nihr.ac.uk



ARCKSScommunications@sussexpartnership.nhs.uk



[@ARC_KSS](https://twitter.com/ARC_KSS)



NIHR School for Social Care Research (SSCR)

Driving forward adult social care research to influence policy and practice

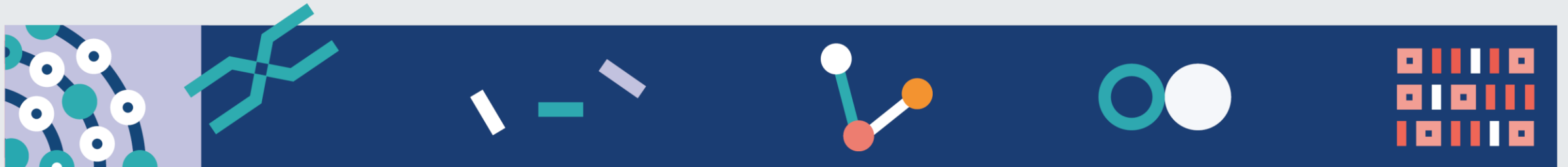
The NIHR School for Social Care Research (SSCR) is a partnership between seven leading academic centres of excellence in adult social care research. The Kent hub comprises research teams within the Personal Social Services Research Unit and the Tizard Centre.

- Who is it for? Researchers, social care practitioners and users of social care services, the public, policymakers
- Geography: All of England with a centre hosted by the University of Kent. Its research has national and international impact

 sscr.nihr.ac.uk

 sscr@lse.ac.uk

 [@NIHRSSCR](https://twitter.com/NIHRSSCR)



Kent Surrey Sussex Academic Health Science Network

**Kent Surrey Sussex
Academic Health Science
Network**

Kent Surrey Sussex Academic Health Science Network (KSS AHSN) is one of the 15 AHSNs across England, established by NHS England in 2013 to improve health and generate economic growth by spreading innovation at pace and scale.

The AHSN connect citizens, NHS and academic organisations, local authorities, the third sector and industry to facilitate change across whole health and social care economies.

They have a clear focus on 'transforming lives through innovation'.

KSS AHSN covers the whole of Kent, Surrey and Sussex. Our impact comes from our ability to bring people, resources and organisations together, delivering benefits that could not be achieved alone.

They understand the needs of our health system and are well placed to broker innovative solutions. We develop projects, programmes and initiatives that reflect the diversity of our region and healthcare challenges.



[KSSahsn.net](https://kssahsn.net)



enquiries@kssahsn.net



[@KSSAHSN](https://twitter.com/KSSAHSN)



The research pipeline for Kent, Surrey and Sussex

From discovery, invention and widespread implementation.

DESIGN	DELIVERY	ADOPTION
Research Design Service		
	Clinical Research Network	
		Applied Research Collaboration



How the NIHR in Kent, Surrey and Sussex work together

- Early career researcher engagement
- Patient and Carer Involvement and Engagement Forum (PCIE)
- Communications group



 nihr-research

 OfficialNIHR

 NIHRresearch

 NIHRtv

 www.nihr.ac.uk