



Theme Public Advisors to the NIHR ARC KSS including membership of the Public and Community Group

The Applied Research Collaboration, Kent Surrey Sussex (ARC KSS) is inviting members of the public (patients, service users, carers) to become Theme Public Advisors and to form part of a 16-18 member Public and Community Group, feeding into the ARC KSS Executive Group and working with our theme and implementation leads. With the recent launch of the [UK Standards for Public Involvement](#) this is a good opportunity to contribute towards embedding effective and innovative public involvement in the newly formed ARC KSS and have a say in our health and social care research programme decisions.

Background

The [National Institute for Health Research \(NIHR\)](#) is the nation's largest funder of health and care research and provides the people, facilities and technology that enables research to thrive. [NIHR Applied Research Collaborations \(ARCs\)](#) support applied health and care research that responds to, and meets, the needs of local populations and local health and care systems.

The NIHR ARC Kent Surrey Sussex (ARC KSS) is one of 15 ARCs across England, part of a £135 million investment by the NIHR to improve the health and care of patients and the public. Led by Sussex Partnership NHS Foundation Trust and Professor Stephen Peckham at the University of Kent, ARC KSS is made up of local providers of NHS services, local providers of care services, NHS commissioners, local authorities, universities, private companies, charities and the public. These collaborations work together to conduct high quality, generalizable, applied health and care research that addresses the specific health or care issues in their region.

NIHR ARCs also act to increase the rate at which research findings are implemented into practice.

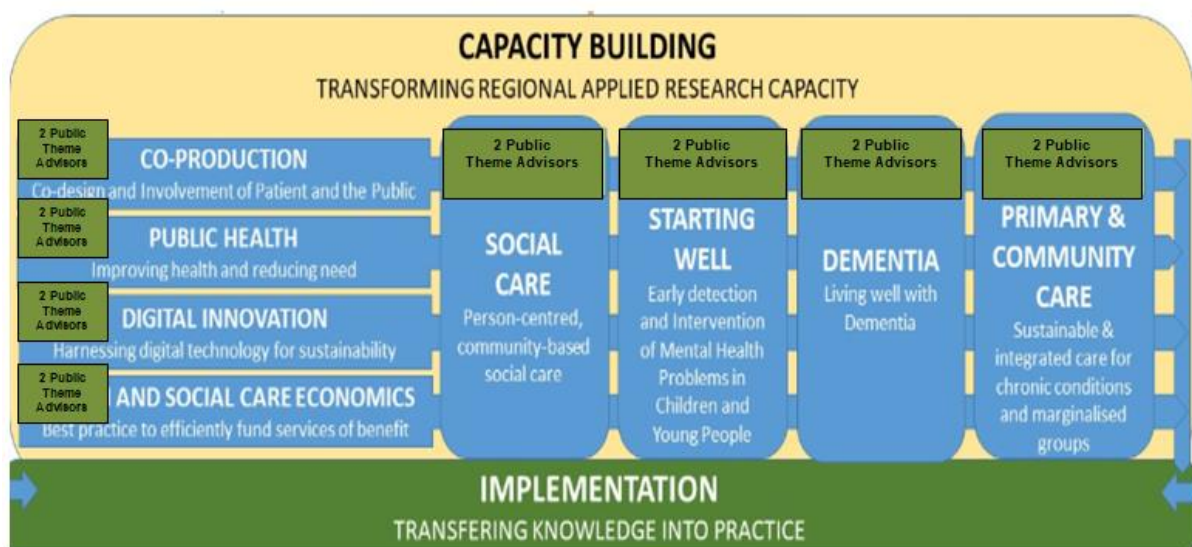
We are focusing our research within four core themes:

1. Social Care
2. Starting well: Early detection and Intervention of Mental Health Problems in Children and Adolescents
3. Primary and Community Health Services
4. Living Well with Dementia

And four cross-cutting themes:

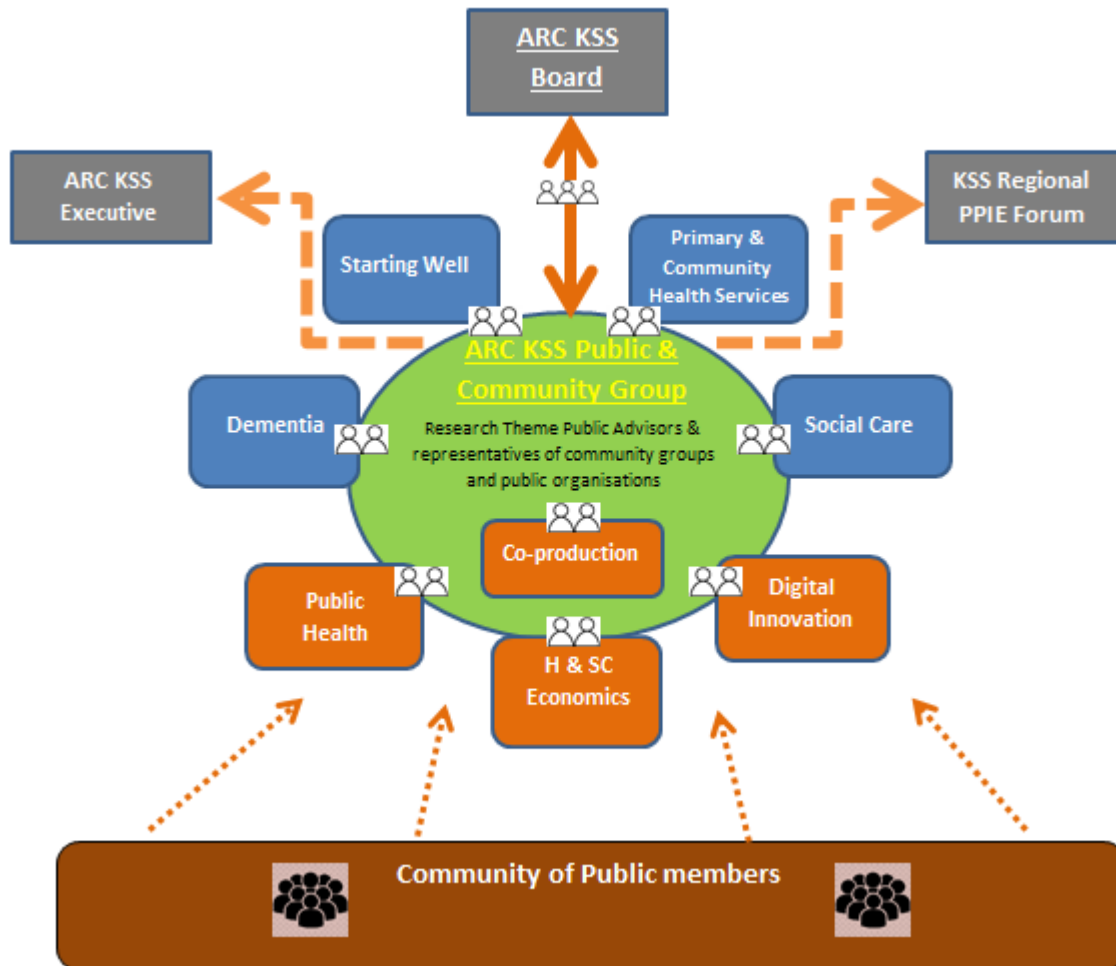
1. Co-production –all our research is co-designed with local communities
2. Public Health: Supporting Wellbeing across the Lifespan – we have a focus on prevention
3. Digital Innovation – we harness its potential for a sustainable health system
4. Health and Social Care Economics – ensuring value for money

ARC KSS is also the national NIHR ARC lead for social care. This means that we are committed to delivering national impact in social care through strategic direction, driving collaborative work across NIHR ARCs in England and maximising efficiency and impact for the benefit of patients and the public, health and care services and broader economic



At ARC KSS we value the experience and expertise that the public can bring to research and to ensure that our work is relevant, representative and responsive to our local population. We have worked in partnership with members of the public to develop our vision and programme so far and wish to continue that work by ensuring public involvement is embedded within the ARC KSS.

The structure of our Public, Community, Involvement and Engagement (PCIE) within ARC KSS is shown in the following diagram.



Three public advisors have been appointed to the ARC KSS Board which has a strategic role for the ARC. We are now seeking to appoint two public advisors per theme. These public advisors will be part of the ARC KSS Public & Community Group and will be supported by a PCIE coordinator and the PCIE Lead. The PCIE structure is closely linked to the co-production cross cutting theme and part of a newly formed regional forum for PPIE

The Role of Theme Public Advisors

We are looking for people over the age of 18 and residing in Kent, Surrey or Sussex to become Theme Public Advisors and also sit on our Public and Community Group. In particular we are looking for people with an interest in applied health and social care research and enthusiasm for implementing research findings to enable best practice within our region. We appreciate diverse representation and encourage applicants from BAME communities, under 25's, carers, LGBTQ+, people with a disability.

Role Specification: General

- Be an active participant in public and community involvement with knowledge of and networks with local communities.
- Able to operate effectively as a team member
- Understand the broader range of patient and public perspectives beyond their own experience with an ability to be objective
- Willingness and ability to read documents and papers and prepare feedback (support is available to assist with this)
- Demonstrate strong commitment to equality and diversity
- Understand the need for confidentiality where appropriate
- Access to email (preferred but not essential)
- Identify individual training and development needs and participate in activities to help undertake this role

Role Specification: Specific

- To be an active member of the ARC KSS Public and Community Group.
- To work in partnership with theme leads, researchers and implementation leads on theme related activities such as project meetings, communities of practice and engagement opportunities, drawing on your unique and valuable knowledge and experience.
- Where appropriate, work with the theme to co-produce and co-design research enabling effective implementation of findings.
- To utilise your networks and knowledge to provide a link between the theme and the broader community.
- Where appropriate, to participate in activities for training, development and support.
- To participate in activities for communication and dissemination of ARC KSS activities.

Activities Specific to membership of the Public and Community Group.

- Attend meetings of the Public and Community Council during the working day around 4 times per year at venues across Kent, Surrey and Sussex for a minimum one-year term (may be extended in negotiation with theme lead and PCIE team) and other Theme related meetings if appropriate.
- To co-produce the terms of reference and structure of the Public and Community Group
- To participate in the development of the ARC KSS Public and Community Involvement and Engagement strategy (due for completion March 2021).
- To monitor the implementation of the strategy to ensure objectives/milestones are met within the time frames agreed and fed up to the ARC KSS Executive Group

Support and reimbursement

Support and an induction will be provided by the Programme Manager and PCIE leads.

You will be reimbursed for your time taking part in Public and Community Council meetings, travel expenses and/or other expenses incurred as part of your work for the Board in line with the ARC KSS' host organisation's Service User and Carer Payment Policy.

Confidentiality and non-disclosure of information

Confidentiality must be maintained in relation to any personal information and information related to personal health the Public Advisor gathers through personal and electronic contact with other ARC KSS Public Advisors, or users of NHS and social care services. Any information related to ARC KSS activities must be treated in confidence.

How to apply

We are seeking public advisors who have user or carer experience of health and social care services, or with experience from a professional health or social background and with an interest in one of our themes. We would particularly welcome people from diverse backgrounds who can act as a critical friend to the theme.

Please submit a letter of application by email or post by **Monday 31st August 2020** to:

ARCKentSurreySussex@sussexpartnership.nhs.uk.

For attention of: Pippa Shaw
ARC KSS
Grove House
Southview Road
Crowborough
East Sussex
TN6 2HB

Your letter should be no more than 2 pages and include:

1. Stating the theme you are interested in aligning to and your reasons for your interest.
2. Your knowledge and links to local communities, especially those relevant to that theme
3. How you meet the role specifications above and any additional skills you have that could contribute to the work of ARC KSS.
4. Any specific training, development or support needs you anticipate in relation to this role.
5. How we can contact you.

For more information or informal discussion please contact Pippa Shaw, Public & Community Involvement & Engagement Team Lead at:

ARCKentSurreySussex@sussexpartnership.nhs.uk

Or on: 0300 304 1846.

Many thanks for your interest.

We look forward to hearing from you.