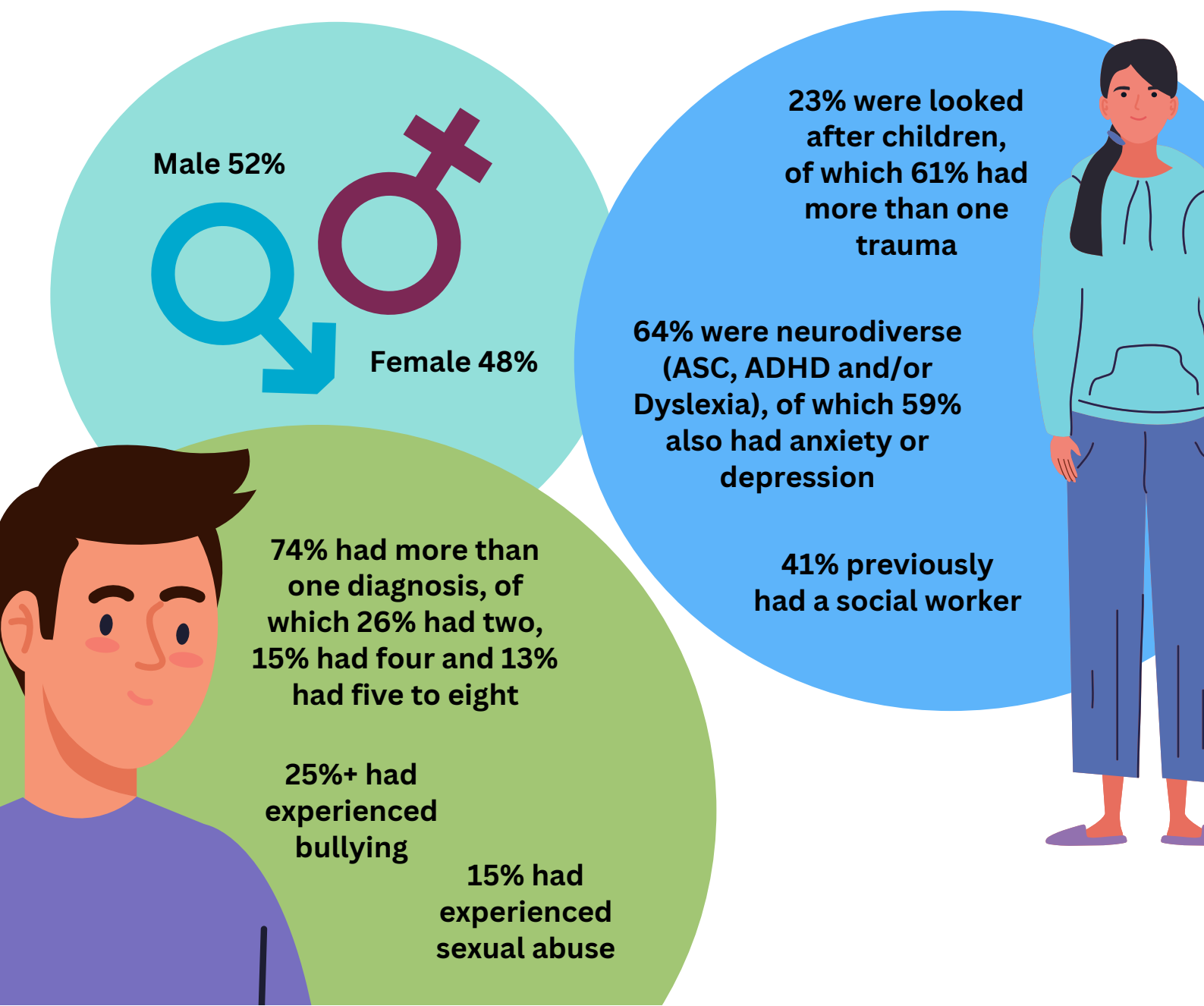


Transitions Audit Report Summary

Between 2018-2019, 1,001 young people open to CAMHS would turn 18. Of that number, 17% (172) transferred to Adult Mental Health Services (AMHS). Reviewing the data again in 2021, 38% (380) had received intervention from adult services.

Data sample

The audit looked at 92 cases in detail from receiving services in CAMHS to being open to an AMHS team.



The findings

The audit demonstrated a need for further mental health support for young people after 18, as well as highlighting both looked after children (LAC) and neurodivergent individuals as key vulnerable groups at the time of transition.

This highlighted a need for specialised and tailored support during the time of transition, as well as closer working between Children' Social Care (LAC) Services and neurodevelopmental services across the age range.



32% had an inpatient admission during their time with CAMHS, AMHS, or both



The majority were referred to AMHS within 36 months of their 18th birthday or discharge

38% of young people who required support after their 18th birthday struggled in an adult environment and required additional age appropriate help



Service users who engaged well with CAMHS services had less symptoms at discharge

Service users presented with higher number of symptoms at AMHS referral compared to when discharged from CAMHS

