

# Identifying Priorities for Research and Implementation in Adult Social Care in Kent, Surrey, and Sussex

## A Focus Group Study

Jolie Keemink, Rebecca Sharp & Julien Forder – Social Care Theme ARC KSS



# Today's presentation



- Background
- Method
- Preliminary results
- Future steps



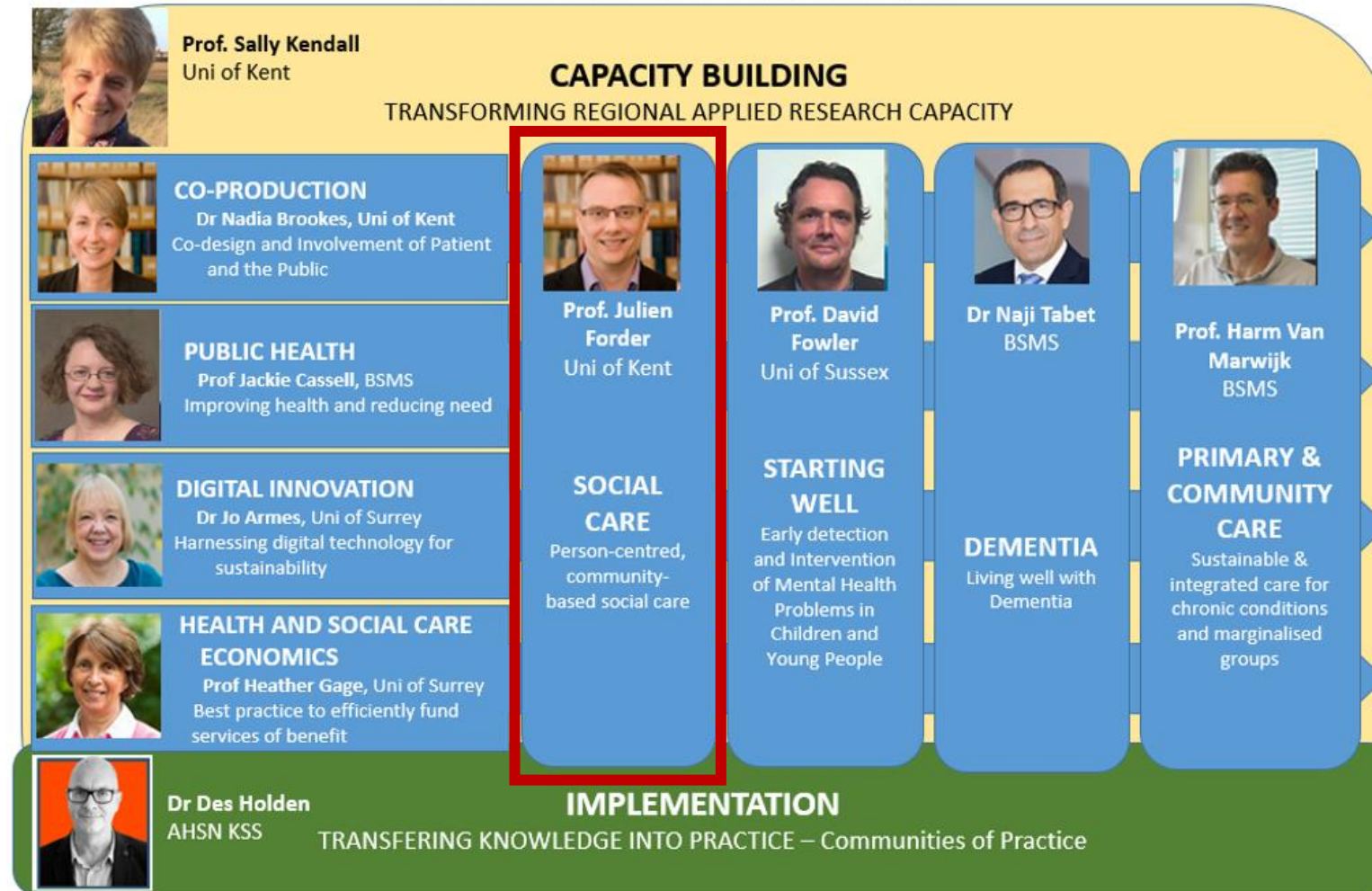
What do ARCs do?

1. Develop regionally-based research partnerships
2. Improve health and social care for stakeholders through implementation of applied health and social care research into practice

# Background



## Research themes





Social Care Theme **objective:**

To undertake research on social care and how changes in service provision impact on service users, their families and carers, and on others

Working with stakeholders, we would prioritise 4 topics to conduct evidence synthesis and data analysis



## Studies on research priorities in adult social care are scarce

1. James Lind Alliance (2018). Ten research priorities for social work
2. School for Social Care Research (2019). Thirty research priorities for adult social care

What's missing:

- local and regional priorities
- bottom up approach
- impact COVID-19

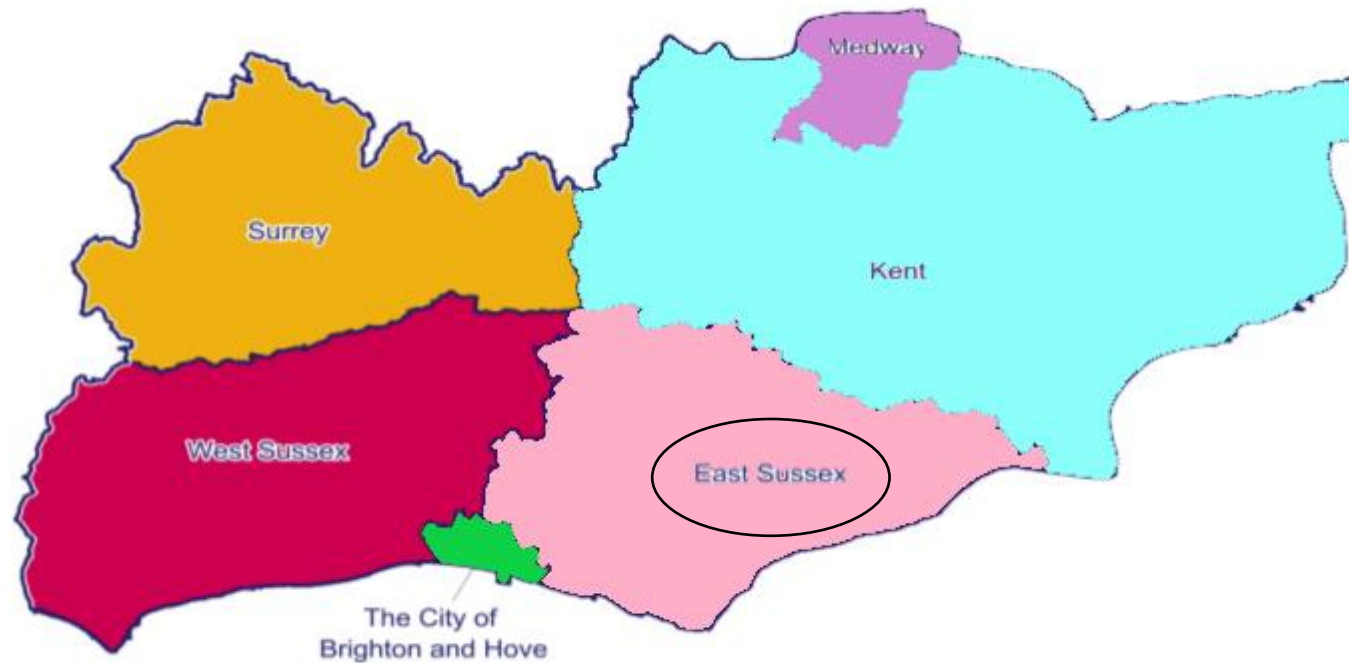


Main objectives of current study:

1. To discuss priority areas in adult social care in KSS
2. To identify relevant activities within these priority areas that can improve stakeholder outcomes
3. To understand the process of online focus groups



## Virtual focus groups on MS Teams and Zoom





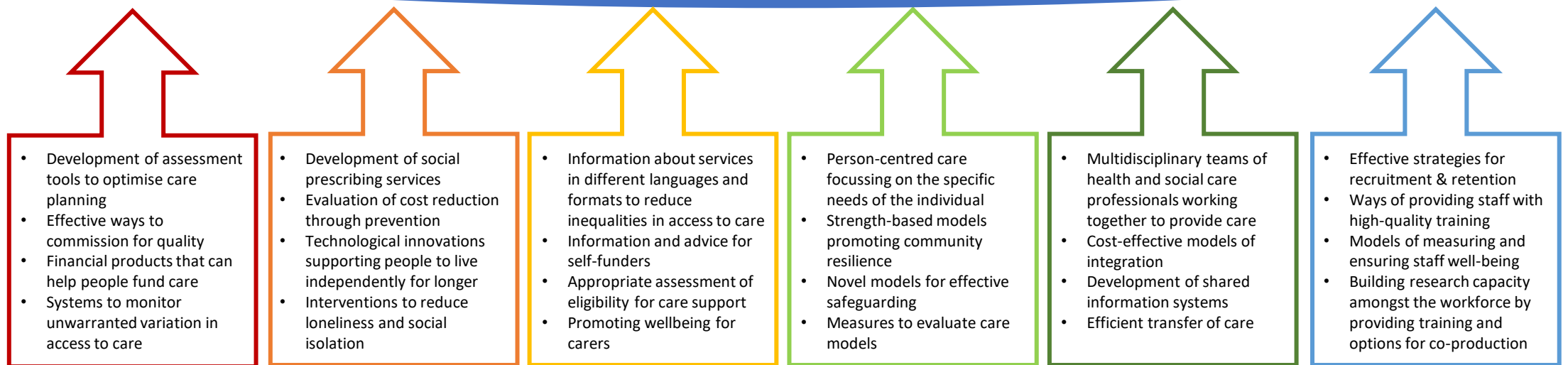


Participants:

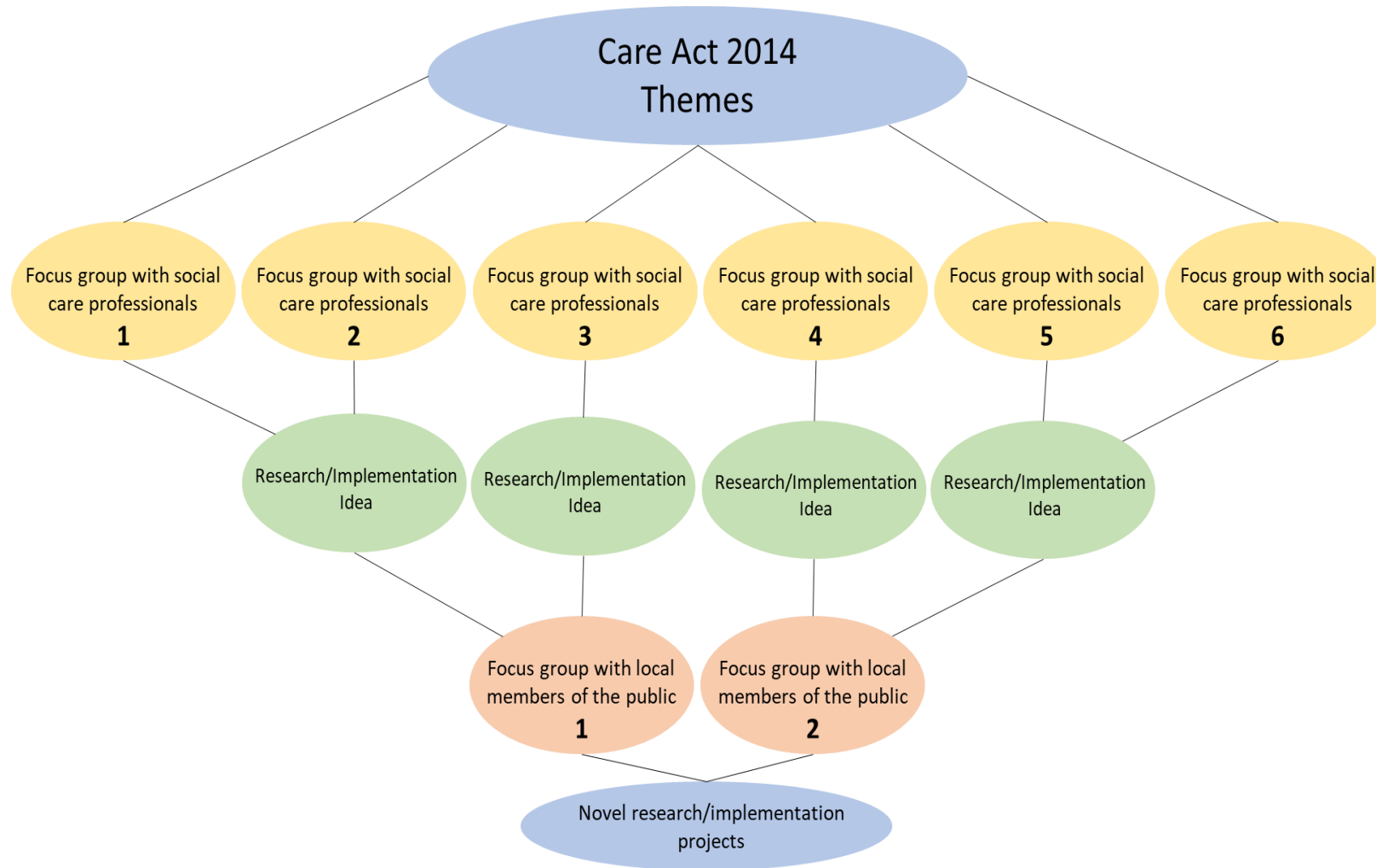
1. Social care professionals
2. Members of the public



## EXAMPLES OF AREAS FOR INNOVATION



# Method





## Post-focus group survey

University of Kent | The UK's European university

Please read the following statements and indicate your agreement.

	Agree	Neither agree nor disagree	Disagree
I felt uncertain about participating in a focus group discussion online.	<input type="radio"/>	<input type="radio"/>	<input type="radio"/>
Communication was more difficult than it would have been in a face-to-face meeting.	<input type="radio"/>	<input type="radio"/>	<input type="radio"/>
The researchers were able to lead to discussion well in an online environment.	<input type="radio"/>	<input type="radio"/>	<input type="radio"/>
I was able to hear and see the other participants well.	<input type="radio"/>	<input type="radio"/>	<input type="radio"/>

Do you have any other comments on your experience of online communication during the focus group?

→

Survey Powered By Qualtrics



Required ethical approvals:

1. ADASS approval
2. University Ethics
3. Research governance approval local authorities



## 1. Care models: strength-based practice

- Stakeholder experiences

- Impact on outcomes

- Barriers and facilitators to implementation

## 2. Information

- First point of entry care support

- Supporting prospective service users to plan care before crisis point

- Monitoring service users who do not meet threshold for statutory support

- Improving digital information access



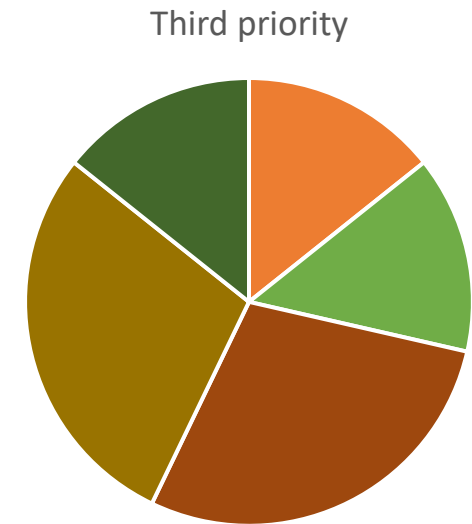
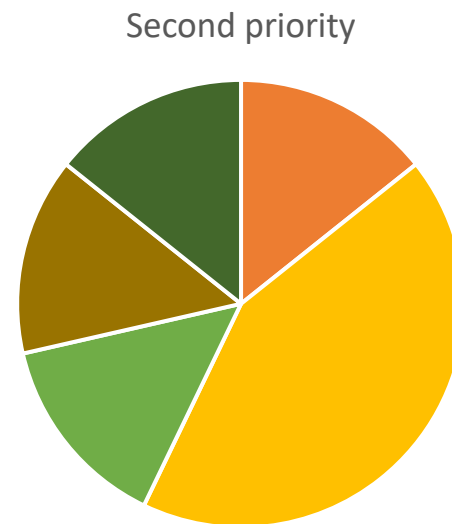
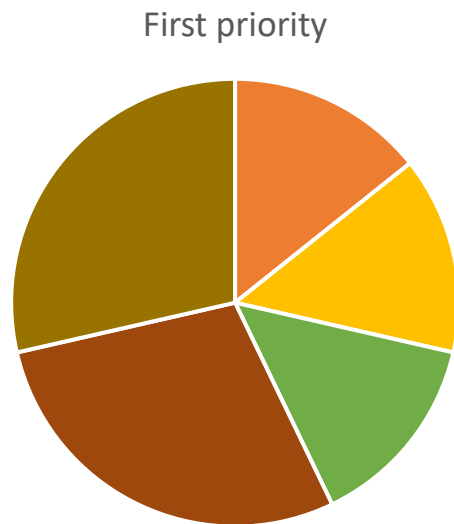
## 3. Integration

- Importance of co-location
- Delegation portal
- Carers identified through GP practice
- Social care support after hospital discharge
- Data sharing

## 4. Prevention

- Efficient digital pathways to promote prevention
- Improved housing support to prevent care needs
- Enhanced health in care homes

# Preliminary results East Sussex: priorities



Commissioning Prevention Information  
Care Models Integration Workforce



# Preliminary results East Sussex: survey



Really useful to hear  
views from staff  
working in East Sussex  
Social Care

I would have liked more  
lower grade staff 'working  
on the ground' to share  
more about what issues  
arise in daily practice when  
delivering services

Always a bit harder to get  
the interactions right  
online, but benefits of  
broader representation far  
outweigh the minor  
drawbacks

## Survey feedback

It took too long to get  
going. To give up two  
hours of time for fairly  
senior operational staff  
is a big commitment

More clarity/framing  
on what was trying to  
be achieved

Facilitator was  
excellent at engaging  
everyone, but some  
participants had less to  
say

The chance to hear  
about problems - and  
solutions - around care



- Additional focus groups professionals
- Focus groups members of the public
- Symposium
- Research/implementation project based on identified activities

Thank you for listening.

Questions?

Email: [j.r.keemink@kent.ac.uk](mailto:j.r.keemink@kent.ac.uk)



@JolieRosanne

Rebecca Sharp  
Implementation  
Manager



Prof Julien Forder  
Theme Lead



Dr Jolie Keemink  
Postdoc

