

ARC KSS Academy Research Week **Social Care Evaluation**

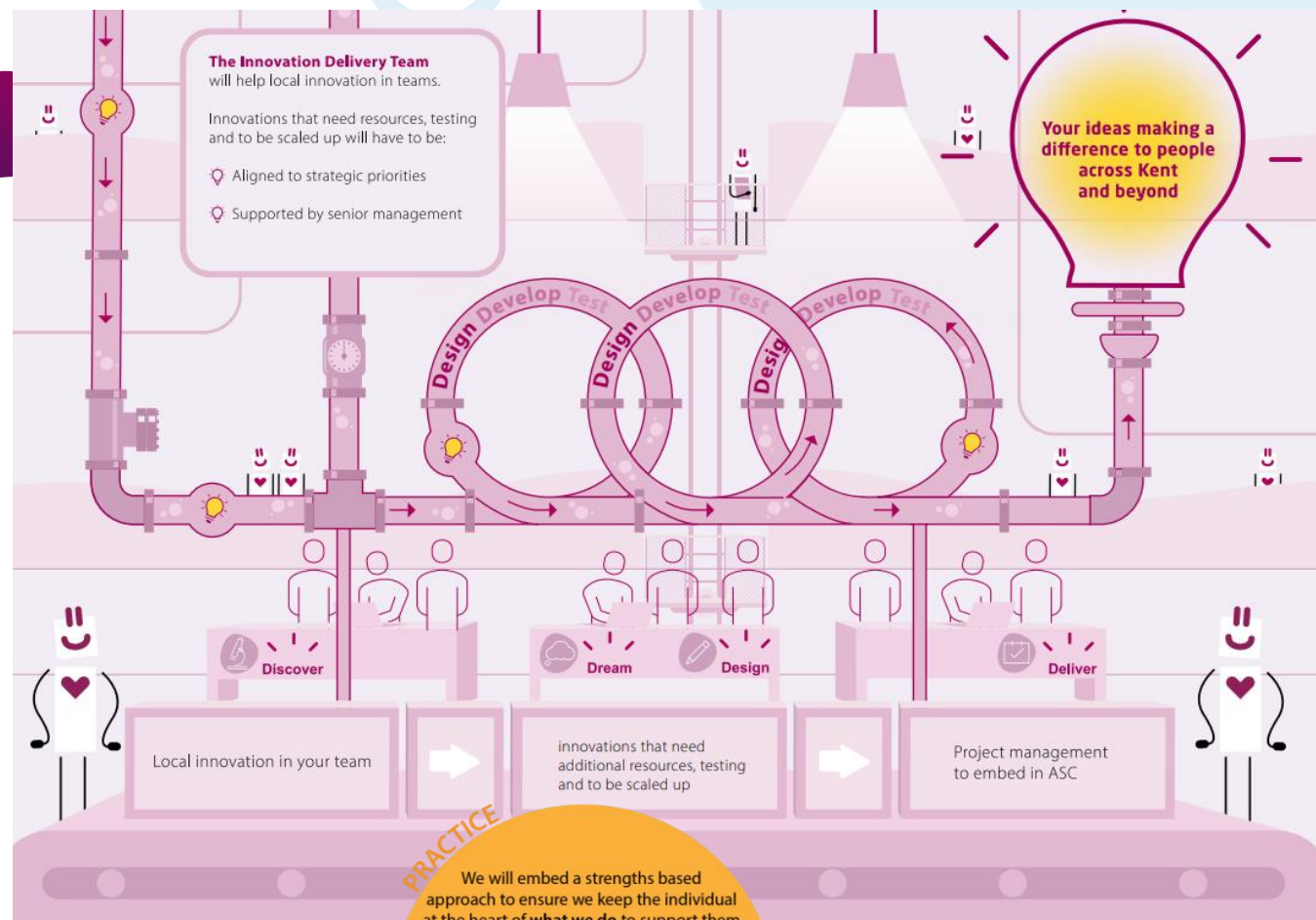
Georgina Walton

Senior Project Manager, Adult Social Care, Kent County Council

Innovation in Social Care

The Innovation Delivery Team uses the **innovation framework** and working with operational teams, managers, partners and providers to:

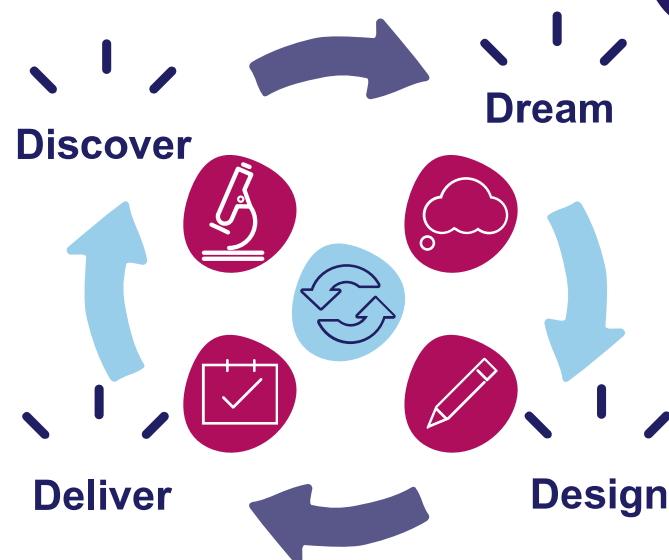
- Give people the tools, support and space to think differently
- Help make the best use of technology and digital within Adult Social Care
- Understand the problem we are trying to solve, design solutions, test, deliver and measure the impact
- Use data and intelligence to inform our work and get greater insights into the needs of the people we support and local place
- Work with teams to ensure that innovation and change activity is continuously reviewed and refined to keep pace with the changing world and demands.



Our Approach

To understand how things are now and what difference you want to make

To explore different ideas, deciding if there is one (or more) you can take forward



To adopt the idea, ensuring it continues to make a difference

To test the ideas and see if it works the way you thought it would

Why is it important?

How can we support you to innovate?

“Not everything needs to be a big project, some improvement can be delivered by us with no budget and no additional resource”

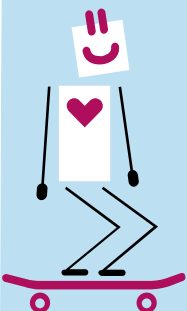
“Measure impact and apply and the learning into practice ”

“We need to find a place for quality improvement alongside projects to support small but impactful innovation”

“we need a culture shift so that our whole workforce is empowered to innovate”



“the workforce element is foundational”



Some of our Projects

Interreg Funded: Empowercare

- EMPOWERCARE aims to reduce social isolation and individual frailty in those who are 65+ (or 50+ with at least one chronic health condition) using technology and local services to empower individuals to remain independent. Working with 13 partners to review relevant person-centered methodologies and consider their use in EMPOWERCARE and the wider social care system.
- In Kent we are implementing a Digital Ambassador scheme, a device loan scheme and a Tech Facilitator role to support the workforce with digital solutions.
- **All of our findings will be analysed in a comprehensive evaluation** of the EMPOWERCARE approach run by Canterbury Christ Church University to outline the benefits and key outcomes our project will create.

Interreg Funded Ensure

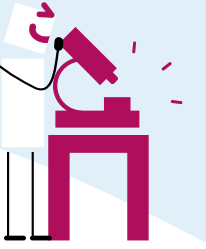
- ENSURE is a pilot to develop a model of peer support for people who can be excluded from mainstream society due to a variety of issues. In Kent, we are working with adults (18+) with autism spectrum conditions and adults (55+) for who self-neglect is a concern.
- **HZ and Antwerp University of Applied Sciences will lead a fully comprehensive evaluation** to produce an evaluation report to promote the positive impact that the ENSURE model will have had both economically and socially.



Research Subgroup

Adult Social Care Research Subgroup:

- ❖ Have oversight of all Adult Social Care research activity.
- ❖ Review all research requests, to ensure that they are strategically aligned and consider operational implications.
- ❖ Track research projects and learning and consider how we apply learning into practice.
- ❖ Shape research communications to keep the workforce informed and engaged.
- ❖ Work with partners to share learning and seek research opportunities.
- ❖ Consider research opportunities for the workforce and how these opportunities are promoted.
- ❖ Inform student research projects.
- ❖ Design and deliver research events.





Questions?