

Dr Melanie Rees-Roberts
Research Programme Manager

**NIHR SPARC awards
Info webinar
ARC KSS research week 2023**

ARCKSSacademy@kent.ac.uk
<https://arc-kss.nihr.ac.uk/>



Today's session – NIHR SPARC awards

1. Overview of the NIHR SPARC award scheme
2. Experience of current SPARC awardee (10 mins) – Deborah Ikhile
3. Q and A – pop your hand up or post in the chat

The session is being recorded and will be posted on our website for all to view

If you do not want to be in the recording, please keep your camera off and ask questions in the chat.

What the NIHR SPARC awards enable.



network, train in a specific skill or collaborate with other researchers/specialists.



optimise and enhance the individuals' research training as well as their **CV** and **academic career**.

NIHR SPARC awards

Stream 1 - SPARC

NIHR academy members only

SPARC award

NIHR academy members

Up to £5000 to do a placement in another part of the NIHR infrastructure.

Stream 2 – LA SPARC

LA employees only

LA SPARC award

Employees of Local authorities

£15,000 to do a placement within an NIHR organisation

NIHR academy members only

LA SPARC award

NIHR academy members

Up to £15,000 to do a placement in a local authority.

NIHR Academy members - eligibility

- NIHR Senior Investigators/Research professors
- NIHR Research Training Award Holders:
 - Research Professors
 - Fellowships
 - Academic fellowships e.g. advanced fellowships
 - ACF/CLs/ICA fellows and CLs/SCLs
- NIHR Academy members based across NIHR Infrastructure, Schools and Global Health Research where:
 - Undertaking a formal training/career development award, which should be competitive, include a training plan and have a defined end point (such as an application for further funding).
 - Receive at least 25% funding from the NIHR/co-funding for salary/stipend over the lifetime of the individual's award.
 - Be hosted in a setting with a remit for research capacity development

We have enquired with the NIHR academy and they will accept funded post-doctoral researchers – talk to us if you are unsure about eligibility.

<https://www.nihr.ac.uk/explore-nihr/support/academy.htm#three>

SPARC – where and what can I do?

Where can I go?

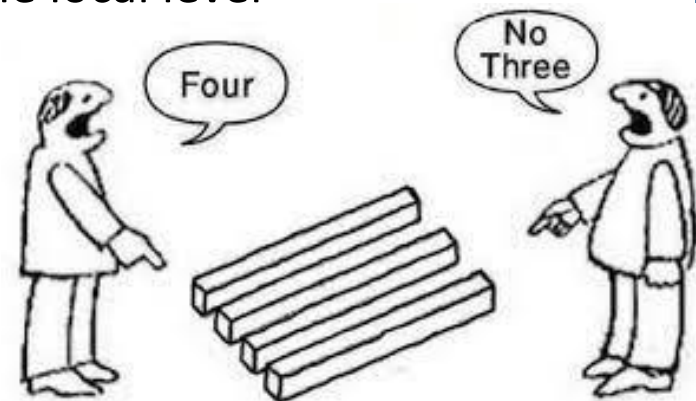
- Browse where can I go guide for NIHR and other organisations

What sort of things can I do:

- Developing skills and/or research career - bespoke programme for you
- Building links and knowledge of research in academia/parts of NIHR
- Experiencing research/practice from a different perspective
- Spend time on placement in a Local authority/provider of local authority commissioned service setting
- Developing partnerships and joint ways of working
- Hear the issues and challenges being faced at the local level
- Share knowledge and experience
- Co-create research connected with practice

Highlight areas:

- Multiple long-term conditions
- Industry/commercial sector



SPARC – practical bits

What funding is available:

- SPARC - £5000, timeframe dependent on activities
 - **NIHR academy members only**
- LA SPARC - £15000, timeframe dependent on activities
 - **NIHR Academy members or LA employees**
 - **NB - Can request funding to cover LA supervisor costs**

How do apply:

- Call will be advertised over summer/early autumn
- Contact us at ARCKSSacademy@kent.ac.uk for advice or if you would like a placement within ARC KSS
- Fill in an **application form in the Aramis system (link below)**

Online info webpage: [Academic Career Development in NIHR Infrastructure and NIHR Schools | NIHR](#)

Application system: <https://aramis.nihr.ac.uk/Login>

What does an application look like?

The application form is not onerous – but start early

- Summary info – employing organisation, placement information e.g. host institution
- CV
- Contact details and supervisor details
- Overview of experience to date
- Proposed title of placement, start date and length
- Placement plan
- Benefits and impact of the placement on your research, training and career, and how you will know whether it has been a successful placement.
- Statement of support from placement supervisor – **plan this early**
- Budget
- Signatories
- Uploads – Gantt chart or other uploads



Timelines



The SPARC Awards are released in **late summer/early autumn for applications.**

Check your eligibility and get in touch with us if you are interested to put in an application –

ARCKSSacademy@kent.ac.uk

Find all details of SPARC on NIHR website: [Academic Career Development in NIHR Infrastructure and NIHR Schools | NIHR](#)

Some recent placements

ARC KSS PhD student – placement with ARC North East North Cumbria

Wanted to understand commissioning perspective from another region to put regional work in perspective:

- Funding allowed 1 month on site placement in ARC NENC
- Link and learn about different commissioning contexts

Local authority employee – placement with ARC KSS

Teacher in a local authority in London – worked in virtual schools provision

- Wanted to do a placement within ARC KSS to build skills in research
- Aim to move towards doctoral fellowship

Public health consultant – placement with ARC KSS

Wanted links to academia to support local research/evaluation project

- To build skills in research with academic supervision –a project
- Aim to move towards doctoral fellowship

ARC KSS post-doctoral researcher – placement with ARC North Thames

What if I'm not eligible

SOMETHING FOR ALL

New this year – [Development and Skills Enhancement award](#) – **now open to all post-doctoral researchers!**

CLINICAL AND ACADEMIC

- post-doctoral level funding
- support early to mid-career researchers in gaining specific skills and experience to underpin the next phase of their research career.
- A DSE award provides funding for:
 - The salary of the award holder for up to 1 year
 - Training and development costs up to £5,000
 - Conference costs up to £1,000
 - Mentorship costs up to £1,000

Full Economic Costings (FEC) are not covered by this award.

Especially interested to hear from those in:

- health data science
- clinical trials
- entrepreneurship and working with industry
- those aspiring to start an academic career
- returning from a career break.

[SPARC awards](#) for collaboration

NIHR academy members of local authority employees

NIHR [ICA](#) and [LAAF](#) programme



NIHR [fellowship awards](#)

Pre-doctoral fellowships

Doctoral fellowships

Advanced fellowships

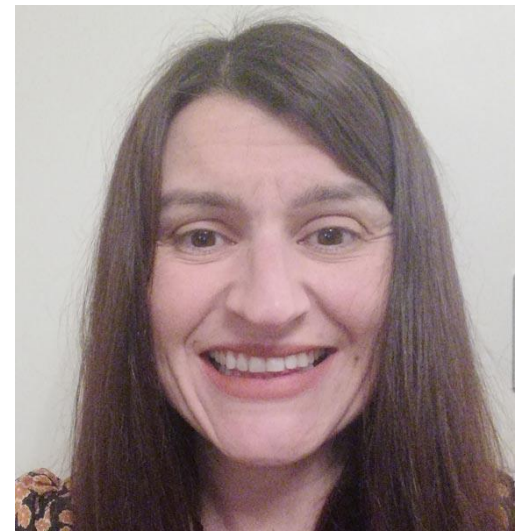
Meet the ARC KSS academy team



Prof Sally Kendall



Dr Melanie Rees-Roberts



Debbie Hayward

Supporting you to achieve your research goals:

- Get in touch: ARCKSSacademy@kent.ac.uk
- [Visit our website](#) for support available



NIHR Short Placement Award for Research Collaboration

Dr Deborah Ikhile
Research Fellow

ARC KSS Primary and Community Health Services Theme
Brighton and Sussex Medical School

D.Ikhile@bsms.ac.uk



#arckssresearchweek2023

About me



- ❑ 2021 – present: Postdoctoral Researcher, Primary and Community Health Services theme, ARC KSS
- ❑ 2016 – 2020: PhD in Public Health
 - *Examining how to strengthen the Primary Health Care capacity for early breast cancer detection in Uganda: A socioecological approach*
- ❑ 2014 – 2015: MA in Public Health
 - *Investigating the perceived barriers to early detection of breast cancer in Central Uganda, using a multilevel approach*
- ❑ 2013 – 2014: MSc Sustainable Planning and Environmental Management
 - *Evaluating the roles of stakeholders in urban development projects: a case study of Hatfield town centre redevelopment*
- ❑ 2006 – 2011: Aquaculture and Fisheries Management



Introduction

- **Focus:** Two streams
 1. Multiple long-term conditions or multi-morbidity (MLTC-M)
 2. Industry/commercial collaboration
- **Title:** Building research capacity for health promotion interventions to support the management of MLTC-M

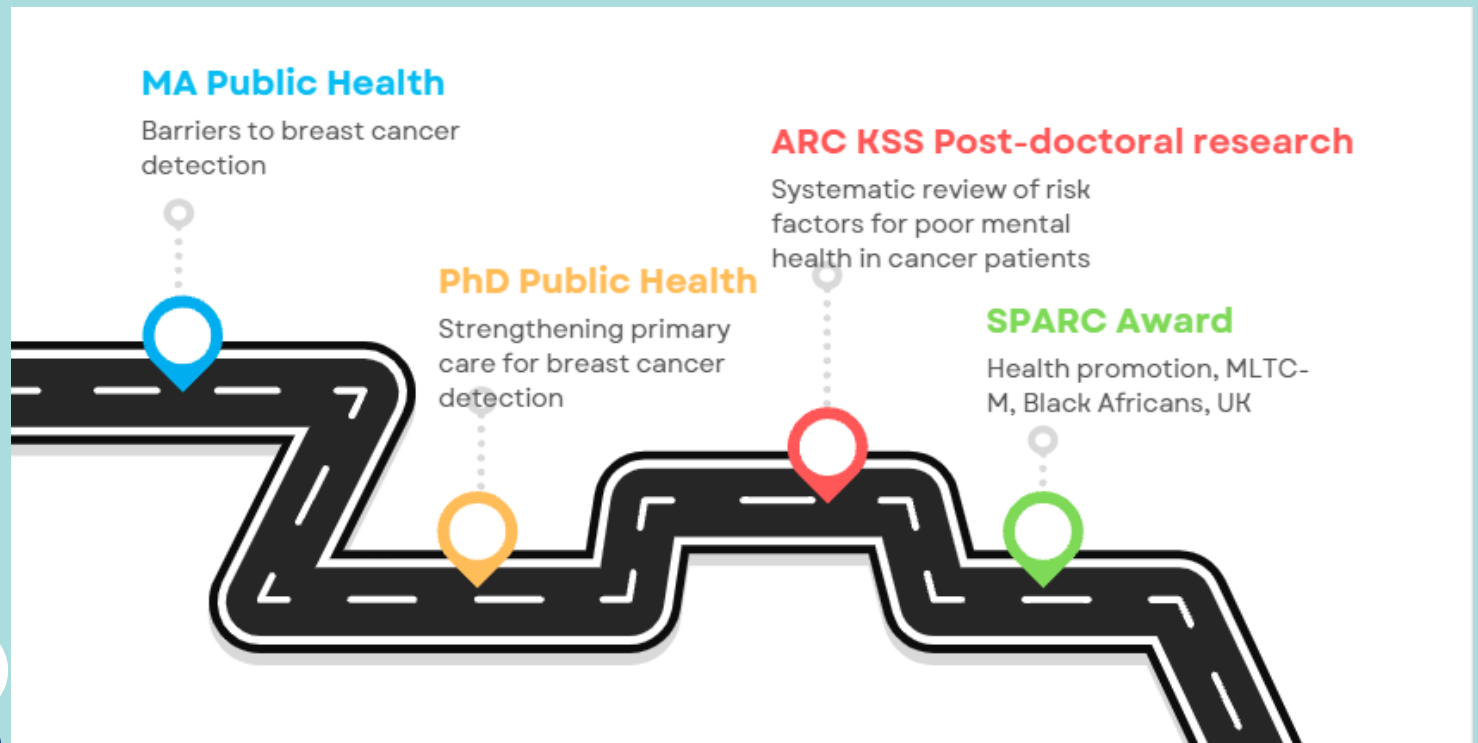


- **Purpose:** ...develop the **skills** and **practical experience** required to tackle health inequalities in multiple long-term conditions or multi-morbidity (MLTC-M) in Black Africans



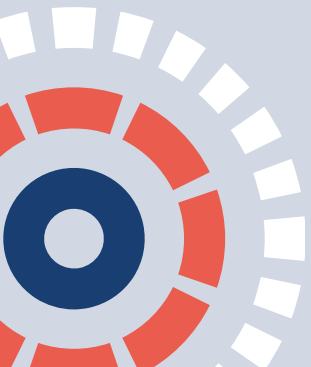
Why I applied for the NIHR SPARC

- Career development
- Enhancing my capacity in health promotion research and practice in the UK



Host Details

- ✓ Multidisciplinary perspectives
- ✓ Social determinants of health
- ✓ Health inequalities
- ✓ Engagement with an ethnically diverse population



MY NIHR SPARC ACTIVITIES

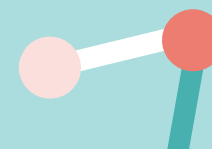
May 2023 - October
2023

1	UMBRELLA REVIEW	Register a systematic review of review protocol
2	RESEARCH ENGAGEMENT	Building a Well Communities Research Consortium to address health disparities through integrated care systems
3	COLLABORATION	ARC North Thames members, partners, local communities
4	CONSULTATIONS	With Black African communities
5	RESEARCH TRAINING	Evidence for Policy & Practice Information Centre

Application process



Application timeline



NIHR SPARC 2022
Call open

28th Sept
2022

Notification of
successful SPARC
award from NIHR

3rd March 2023

30th Sept 2022

ARC KSS Academy SPARC
Session

23rd Nov 2022

Application
submitted

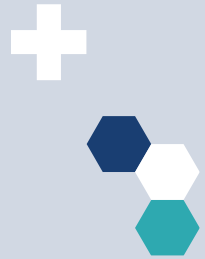
Emailed ARC KSS
Academy about my
intention to apply

4th Oct 2022

Introductory email
from ARC KSS to
Host

20th October
2022

Benefits and emerging outcomes



Confidence boost



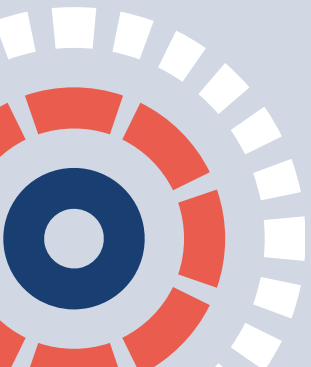
Expanding my
professional
network



New cross-ARC
collaboration with
LSHTM



Connections with
local organisations



Summary

- Seek support from the ARC KSS Academy team
- Show clearly how the SPARC complements/builds on your research background and professional experience
- Align your proposal with the NIHR objectives, national priorities...but keep it simple
- Provide a clear rationale for:
 - Applying
 - Choosing selected ARC, host institution and host supervisor
- Time management is key
 - Start early- the earlier the better
 - Discuss with potential supervisor as early as possible
 - Aim to click submit 48 hours before the deadline
- Prepare first, second, third drafts 😊
- Keep everyone updated
 - ARC KSS Academy Team, Current supervisor, Host supervisor, Research Development Office



Thanks for listening



www.arc-kss.nihr.ac.uk



@arc_kss

#arckssresearchweek2023

