



# National Priorities Programme for Adult Social Care and Social work

Madalina Toma and Julien Forder

23 June 2022



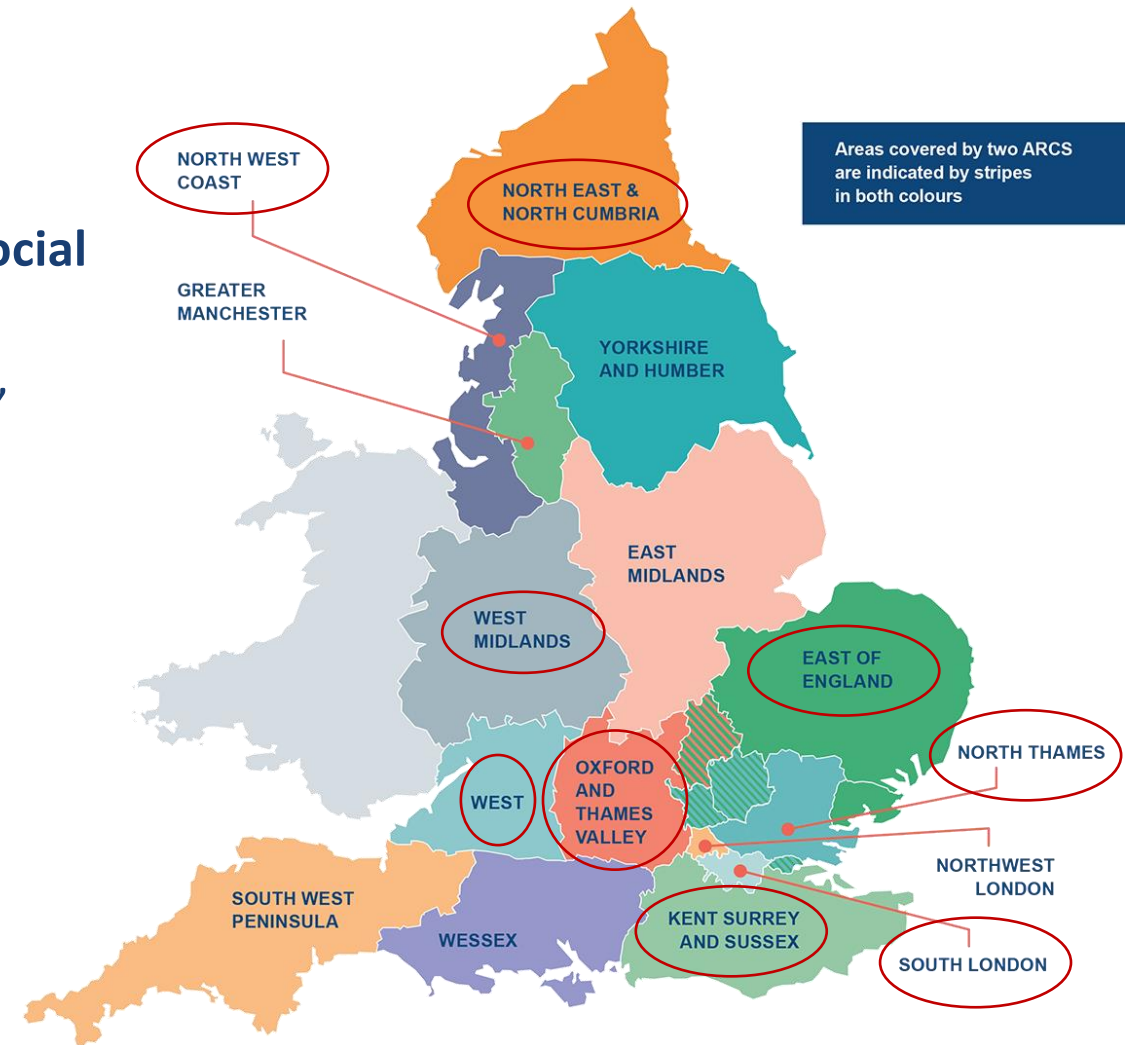
# National priorities programme for Adult Social Care and Social work

Aim: Support the implementation of evidence-based (evaluated) service change at national level in **adult social care and social work (ASCSW)**...

.... as identified by care users and carers, practitioners, professions, researchers, and the wider public.

£1.85m funding from NIHR over three years

ARK Kent, Surrey and Sussex (lead)  
ARC Oxford and Thames Valley  
ARC East of England  
ARC West  
ARC West Midlands  
ARC North East and North Cumbria  
ARC North Thames  
ARC South London  
ARC North West Coast

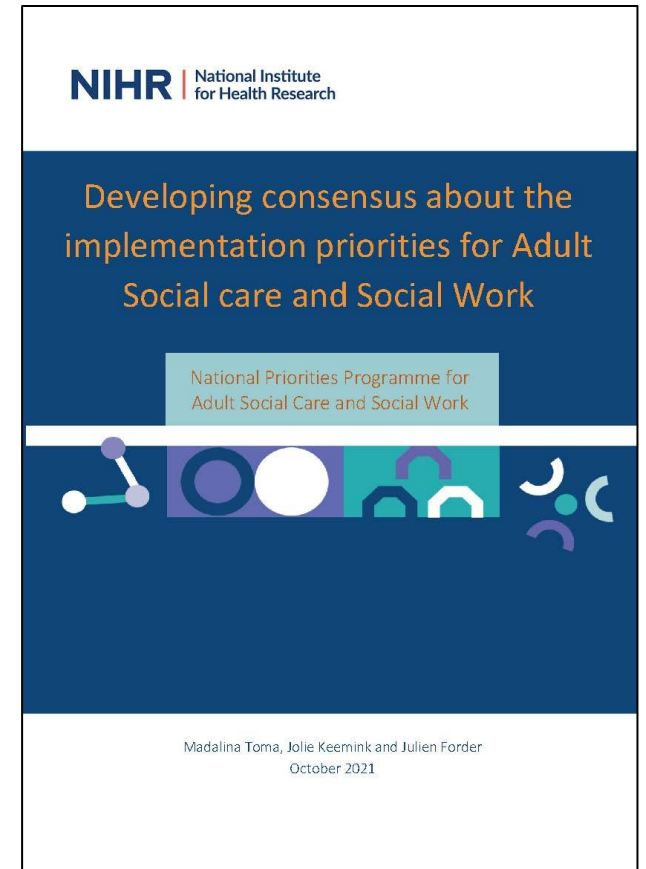


# Programme stages/phases



# 1. Prioritisation phase

- Undertook a prioritisation study
- (1) Longlist
  - Looked at available documents e.g. Care Act 2014
  - Fed in ARC partners regional work
  - Initial canvassing of views
- (2) Shortlist
  - Three panels to produce a shortlist from 10 topics in longlist
    - Policy makers
    - Public contributions
    - ARC consortium
  - Scored/rated the topics – results combined
  - Four topics shortlisted



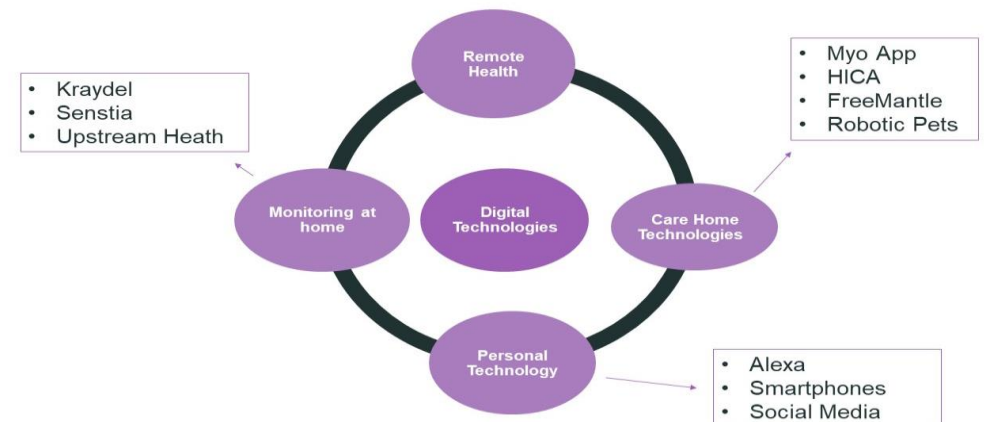
# Well-being in care homes: implementation of outcomes-based practice



- Around 400,000 older people in the UK reside in care homes.
- Assessments need to be carried out considering people's **needs**, their **wellbeing and the outcomes** they want to achieve.
- Care homes collect vast amounts of data about residents' well-being but unclear how systematically this data is collected to inform care
- The overall aim is to inform the further development of quality of life approaches towards care planning in older adult care homes.
  - *Identify and learn from existing care planning approaches <https://osf.io/r9gn2>*
  - *Understand the perspectives of the older-adult care home sector*
  - *Co-design a quality of life care planning intervention*

# Digital technologies to support wellbeing of community dwelling adults in receipt of social care and their carers (DiTSoW)

- Digital tech (DT) – most development re. health monitor health (telecare) and remote consultation etc.
- Our focus: DT to promote *social wellbeing* (e.g. help people with care needs to engage, reduce social isolation etc.)
- Aims:
  - *To explore and map relevant DT that contribute to social well-being (scoping review)*
  - *Explore the perceptions of Commissioners / Providers / Community Orgs / Developers about the value and adoption of DT*
  - *Assess the challenges in putting DT into practice*
  - *Determine best ways to evaluate DT*



# Integrating social care in response to Intimate Partner Violence and Abuse: supporting the adult and child victim (VISTA)

- Intimate partner violence and abuse (IPVA) is a prevalent and substantial social issue
- Significant harms to the adult victim... Within the context of parenting, significant harms to the exposed child
- IPVA is a priority issue that spans both adult and children social care
- Aims:
  - Identify innovative models/solutions regarding IPVA (qualitative systematic review)  
[https://www.crd.york.ac.uk/prospero/display\\_record.php?RecordID=319157](https://www.crd.york.ac.uk/prospero/display_record.php?RecordID=319157)
  - Explore barriers and facilitators of effective integrated working between Adult's and Children's social care
  - Consider whole-systems implementation of IPVA models



# Using community resources to improve wellbeing (strengths based approaches)

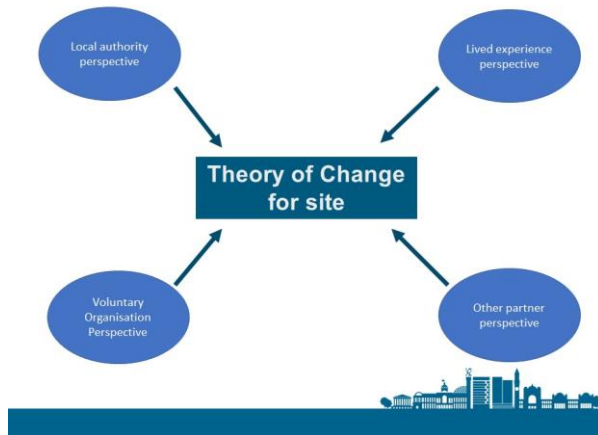
- New thinking on how to organise care:
  - a person-centred approach,
  - focusing on person's strengths and capabilities (outcomes),
  - support available from families and the community
- ... a 'strengths based approach' (SBA)
- Community Led Support (CLS) and Connected Communities (CC)
- Aims :
  - To identify key features of SBA
  - To assess how best to put this into practice (implementation)
  - Work with local partners to develop insights about how effective SBA is in practice





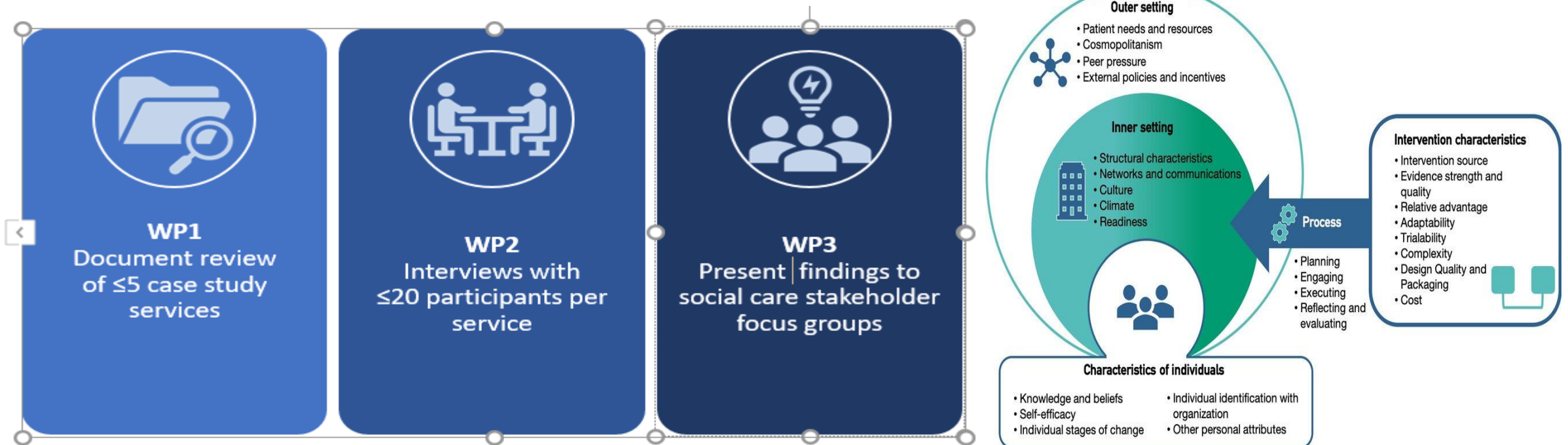
# Community Led Support (CLS)

- Five sites have volunteered to be case studies
- Documentary analysis to provide an overview of the programme
- Theory of change interviews using ecomaps to explore culture/leadership, co-production and use of data
- Effectiveness-potential to collect system and client level data



# CONNECTED COMMUNITIES | Implementation of person-centred community-based support services, and lessons for social care providers

- Mixed methods study to explore the process of embedding a new person-centred community-based support service into usual working practices (*NPT*), and identify the contextual factors affecting the service implementation (*CFIR*).



# 3. Social care and social work (implementation) research infrastructure development

- National strategy and project specific PCIEP groups
- Resources to support evaluation and research in social care by the ARC partners
- Working with other programmes on applied research in social care

Did it make a difference? Uses of the James Lind Alliance Adult Social Work research priorities partnership report

Chloe Waterman and Jill Manthorpe

NIHR Applied Research Collaboration National Priorities Programme for Adult Social Care and Social Work

NIHR Policy Research Unit in Health and Social Care Workforce

NIHR | Applied Research Collaboration West Midlands CO-PRODUCTION WORKS  
Health, Equity and Change in Public Services

**“Equal access to the knowledge table”**

Scoping exercise:  
Public & Community Involvement, Engagement & Participation in NIHR Applied Research Collaboration National Priority Consortium for Adult Social Care and Social Work

**Summary of the main themes and recommendations**  
Pete Fleischmann, Magdalena Skrybant, Sophie Staniszewska & Robin Miller

Contact:  
Dr Magdalena Skrybant – [m.t.skrybant@bham.ac.uk](mailto:m.t.skrybant@bham.ac.uk)  
Professor Robin Miller – [r.s.miller@bham.ac.uk](mailto:r.s.miller@bham.ac.uk)

This scoping was funded by the National Institute for Health Research (NIHR) Applied Research Collaboration National Priority Programme for Social Care and Social Work.  
The views expressed are those of the author(s) and not necessarily those of the NHS, the NIHR or the Department of Health and Social Care.



<https://arc-kss.nihr.ac.uk/research-and-implementation/national-priorities-programme-in-adult-social-care-and-social-work>



m.toma@kent.ac.uk



@toma\_madalina84  
@ARC\_KSS

